

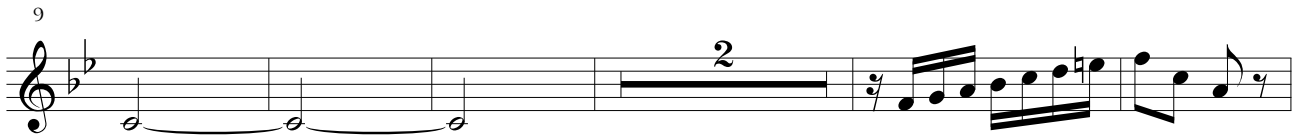
Vierstimmige Kanon-Etüde durch alle Tonarten für Querflötenquartett

Adrian Wehlte

Flöte 4



9



16



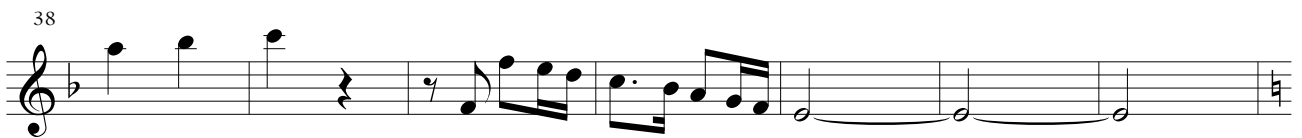
23



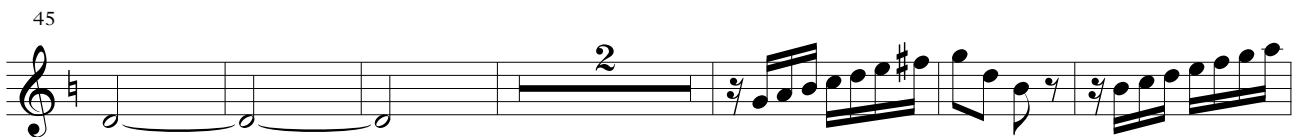
30



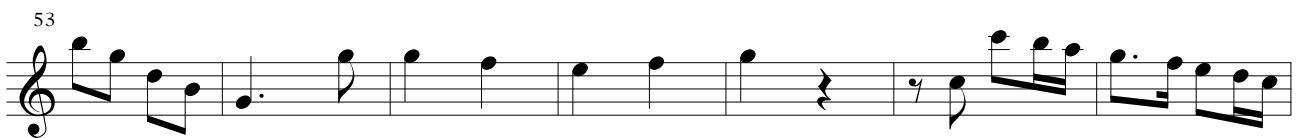
38



45



53



60



69



76



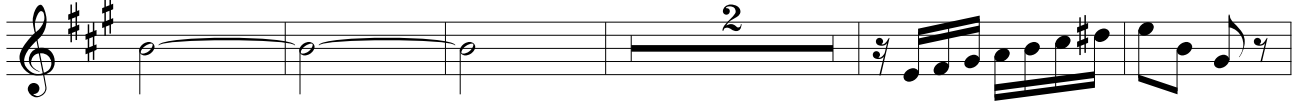
84



92



99



106



112



120



Langversion



132



140



146



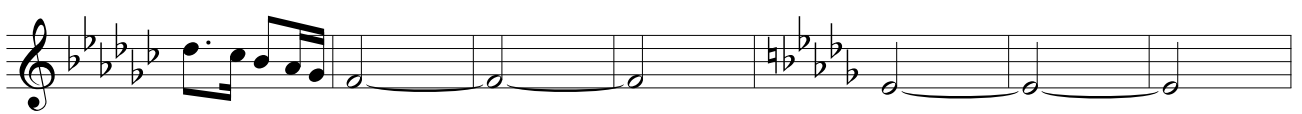
153



161



167



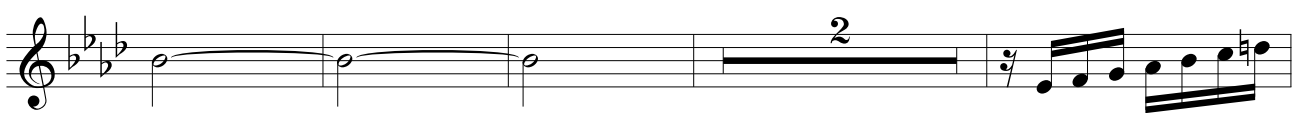
174



181



189



195



202



210



Dritte Kanon-Etüde durch alle Tonarten für Querflötenquartett

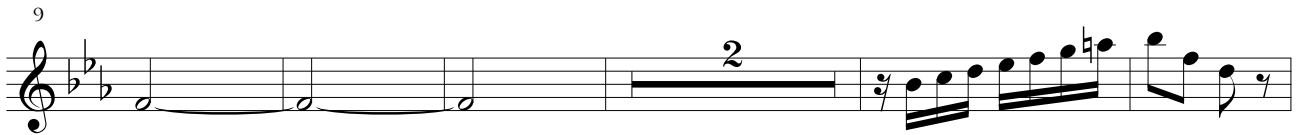
Altquerflötenstimme

Adrian Wehlte

Altflöte in G



9



16



23



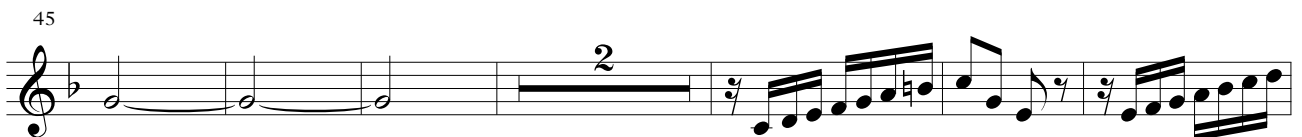
30



38



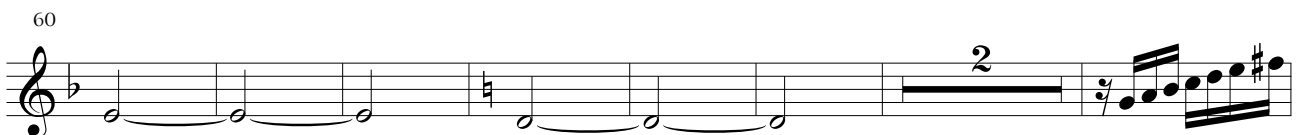
45



53



60



69



76



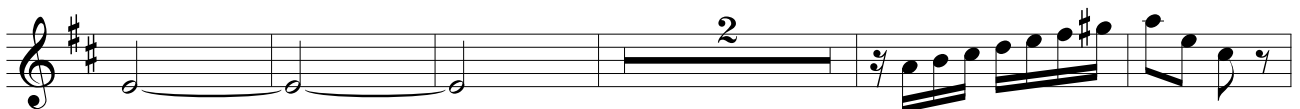
84



92



99



106



112



120



Langversion



132



140



146



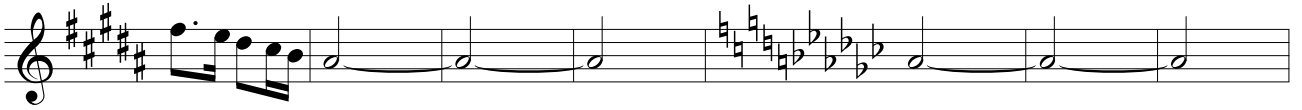
153



161



167



174



181



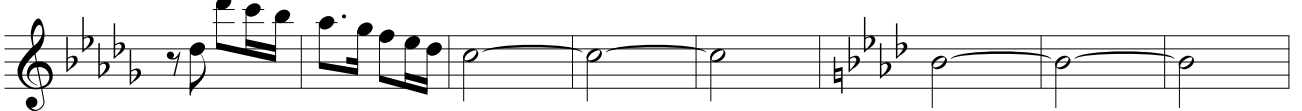
189



195



202



210

