

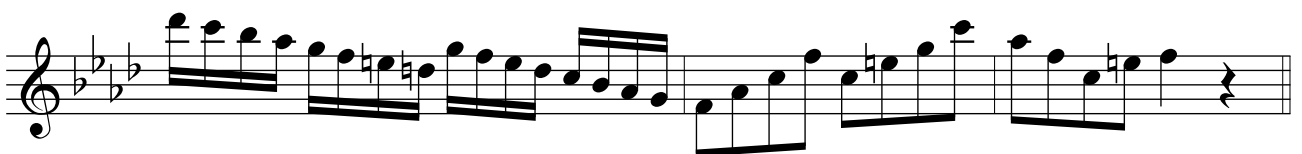
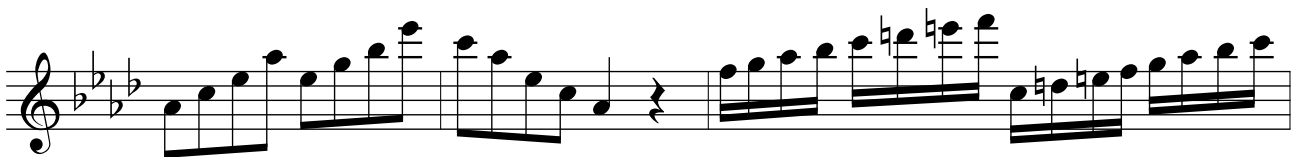
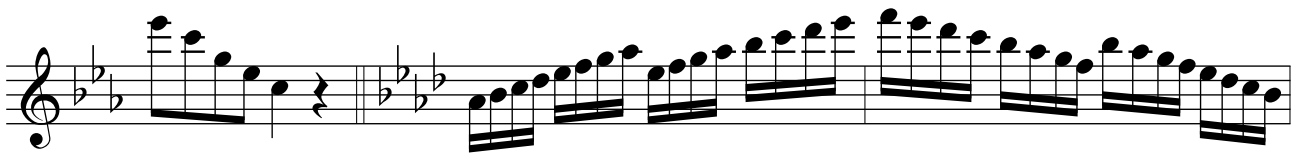
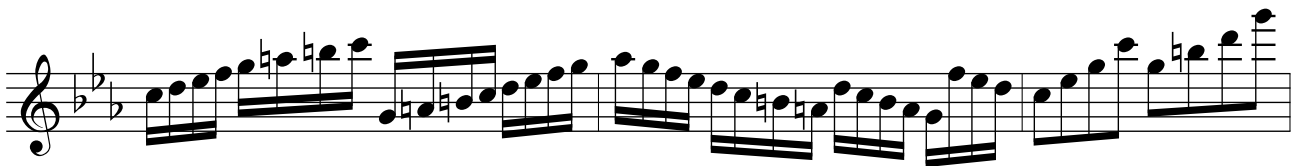
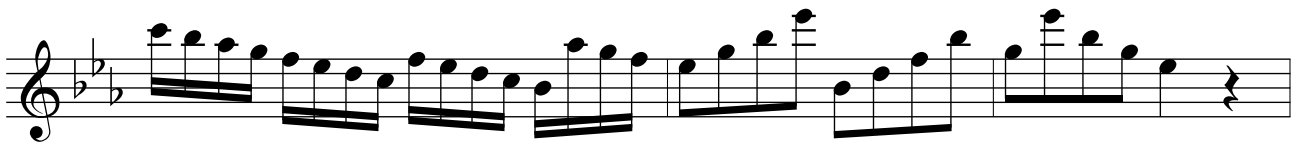
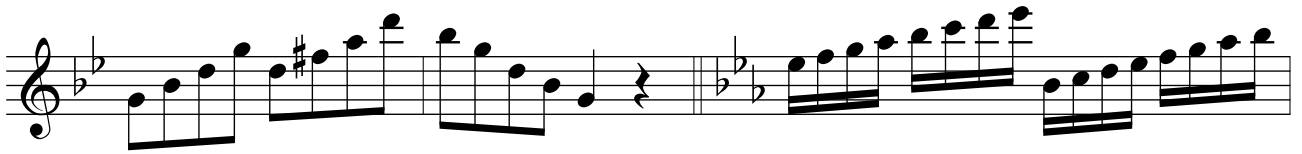
Tonleitern und Dreiklänge in allen Tonarten

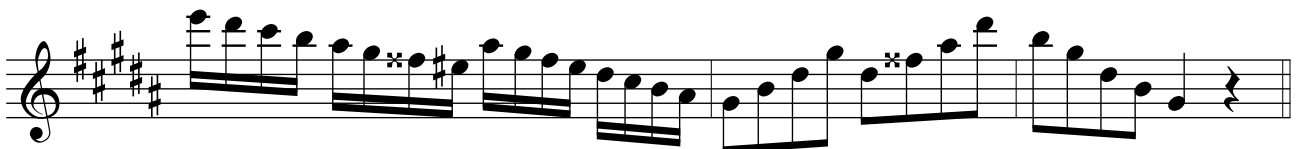
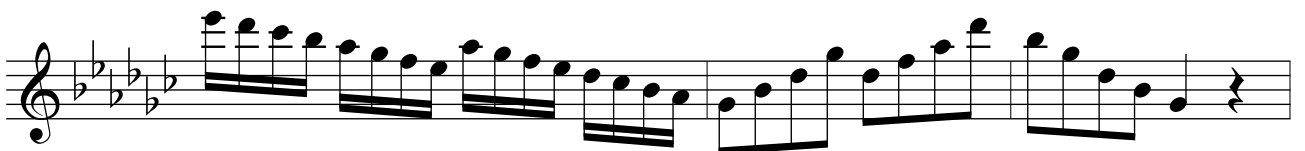
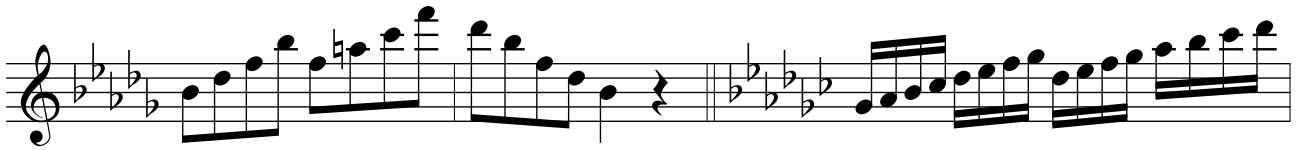
Adrian Wehlte

The image displays a musical score for the Altblockflöte (alto flute) in C major, consisting of eight staves of music. Each staff contains a scale and a triad exercise. The exercises are organized as follows:

- Staff 1: C major scale (ascending and descending) and C major triad.
- Staff 2: D major scale (ascending and descending) and D major triad.
- Staff 3: E major scale (ascending and descending) and E major triad.
- Staff 4: F major scale (ascending and descending) and F major triad.
- Staff 5: G major scale (ascending and descending) and G major triad.
- Staff 6: A major scale (ascending and descending) and A major triad.
- Staff 7: B major scale (ascending and descending) and B major triad.
- Staff 8: C minor scale (ascending and descending) and C minor triad.

The notation includes treble clefs, a common time signature (C), and various musical symbols such as sharps, naturals, and accidentals to indicate the specific keys and notes. The exercises are designed to help the player master the fingerings and intonation of scales and triads in every major and minor key.





The image displays a single-staff musical score for an alto flute, consisting of eight staves of music. The key signature is three sharps (F#, C#, G#) and the time signature is 2/4. The music features a complex, rhythmic melody with many sixteenth and thirty-second notes, often beamed together. There are several rests and dynamic markings throughout the piece.

Für diese Etüde gibt es eine 2. Altblockflötenstimme, die ad libitum dazu gespielt werden kann:
Partitur der Duetüde unter www.floetennoten.net