

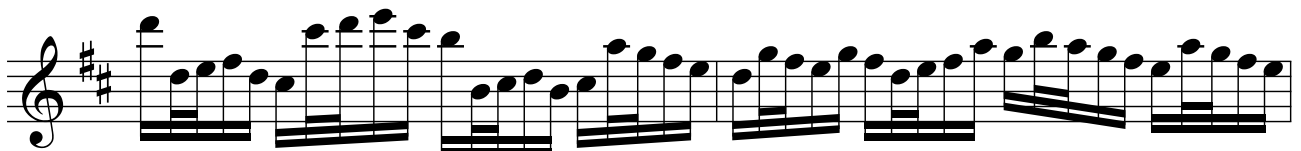
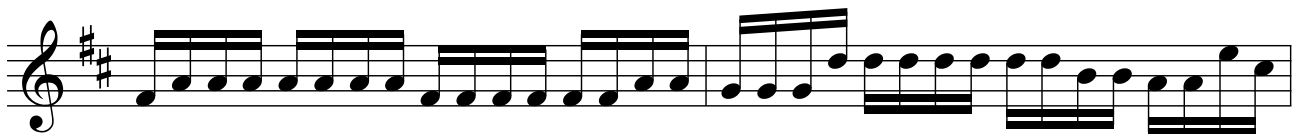
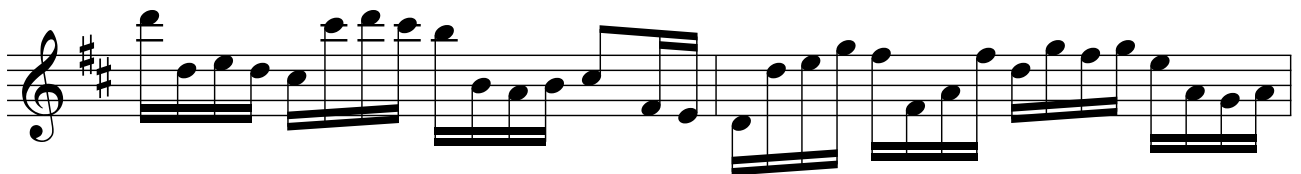
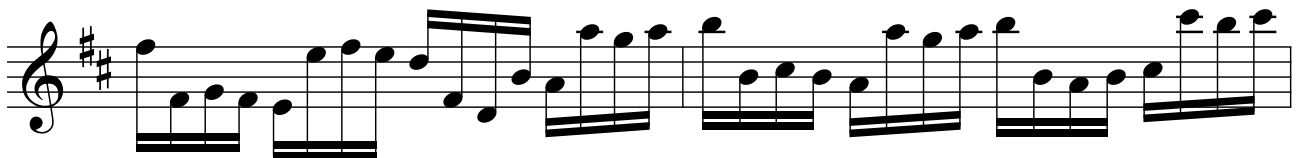
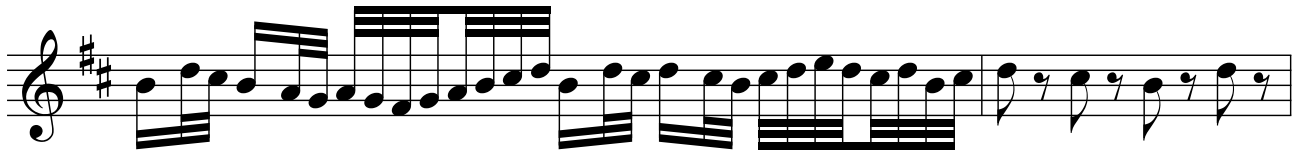
Johann Pachelbel Kanon für 4 Flöten

arr. Adrian Wehlte

1. *Basso ostinato*

2. 3.

Flöte 1 - 3



Six staves of musical notation for the Pachelbel Canon, page 3. The notation is in G major (one sharp) and common time. The first five staves show the main melodic lines with various rhythmic patterns including sixteenth and thirty-second notes. The sixth staff concludes the section with a fermata over the final note.

Altflöte in g

28 x

Kontrabass
ad lib.

28 x

pizz