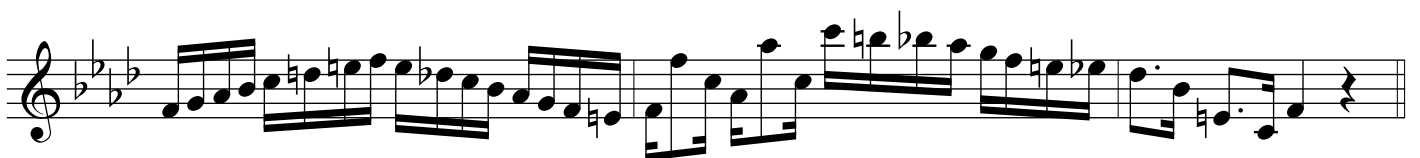
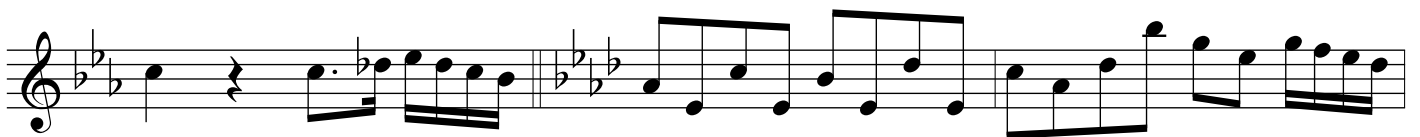
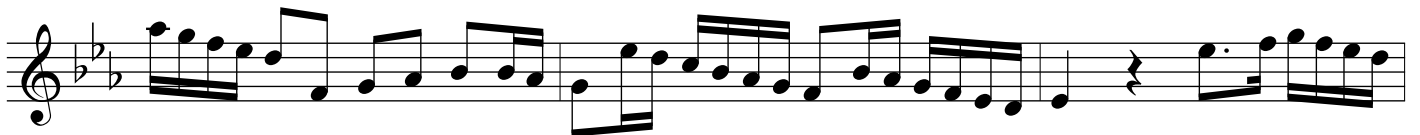
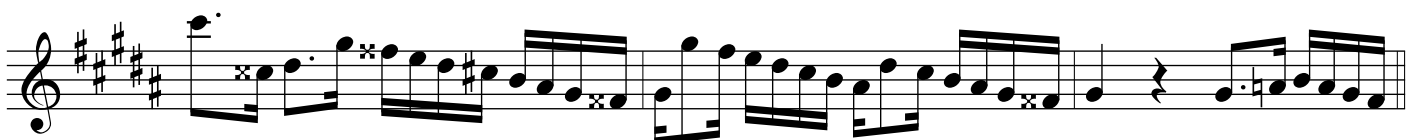
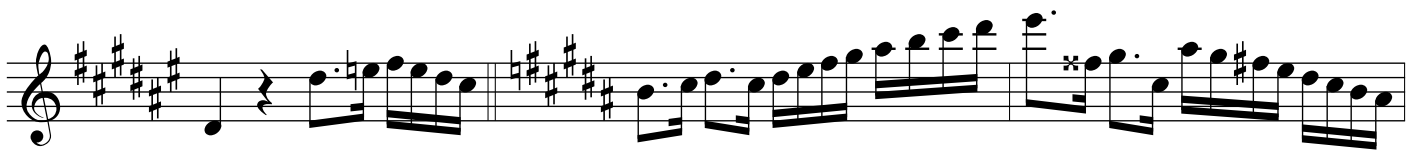
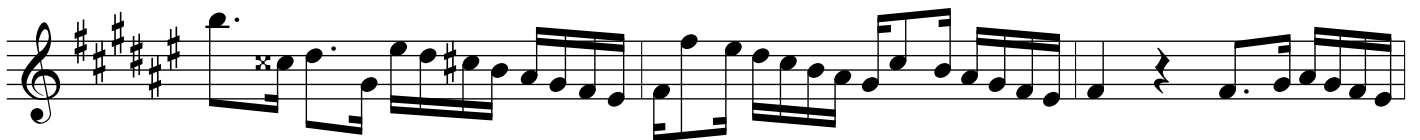
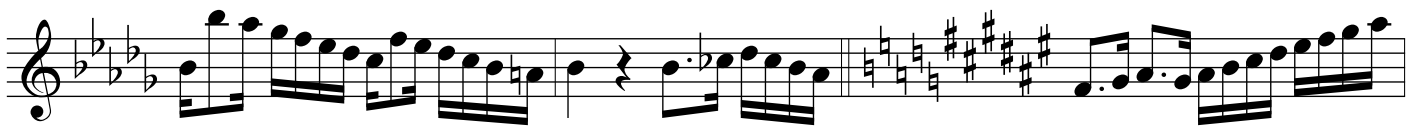


Tonleitern und Dreiklänge in allen Tonarten

Zweite Stimme zur Begleitung der Etüde

The image displays a musical score for the second voice of a flute etude. It consists of eight staves of music, each representing a different key signature. The first four staves are in major keys: C major, G major, D major, and A major. The last four staves are in minor keys: E minor, B minor, F minor, and C minor. Each staff contains a sequence of notes and rests, including scales and triads, designed for accompaniment. The notation includes treble clefs, a common time signature (C), and various note values such as eighth and sixteenth notes. The score is presented in a clean, black-and-white format.





Das Erstellen der Arrangements und die Veröffentlichung im Internet ist mit Kosten verbunden. Sie bekommen die vollständigen und zum Druck freigegebenen Noten nach Bezahlung unter:

If you purchase the sheet music, you will get the complete and printable sheet music version at:

<http://www.floetennoten.net>