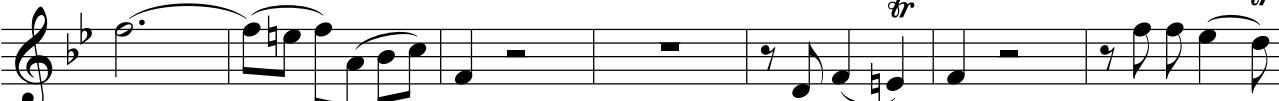


Carl Philipp Emanuel Bach
Sonate G-dur Wq 163
für Flauto d'Amore und Cembalo

Flauto d'Amore in A 

5 

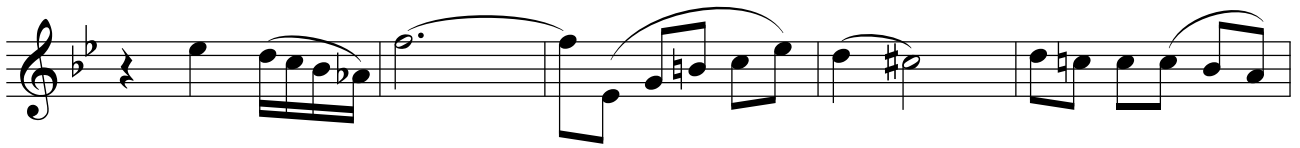
10 

15 

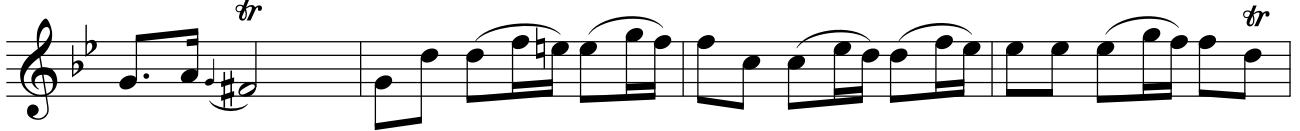
22 

27 

32



37



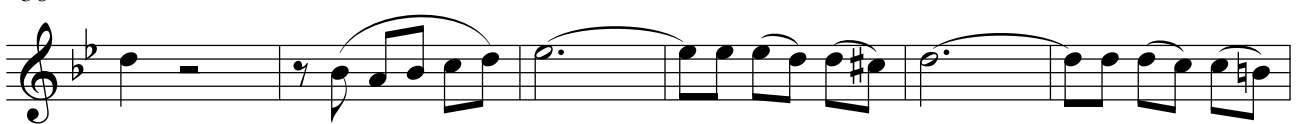
41



45



50



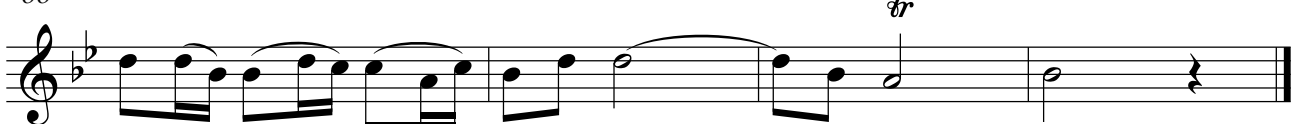
56



60



66



Allegretto

8 *ten.* *ten.*

12 *ten.* 3 3 *tr*
original

17

22 *ten.*

27

32 *p* *f* *p*

37 *f*

42

p *f* *p* *f*

47

3 1. 2. 3

52

ten. *ten.*

57

ten. *ten.* *ten.* *ten.*

62

3 *tr* 3

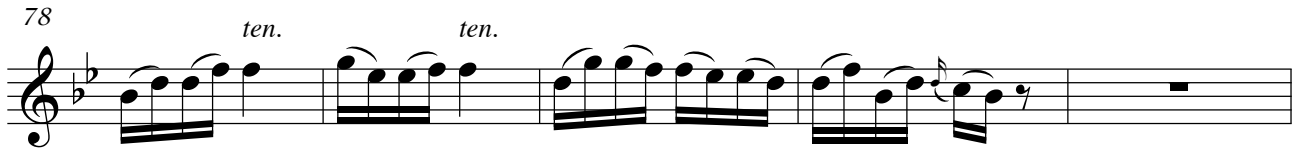
67

tr

73

7

78 *ten.* *ten.*



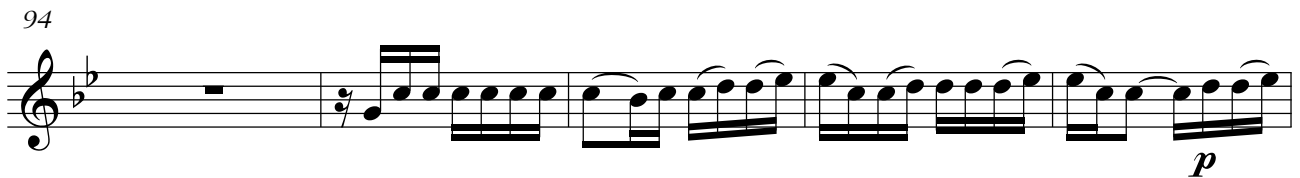
83



88



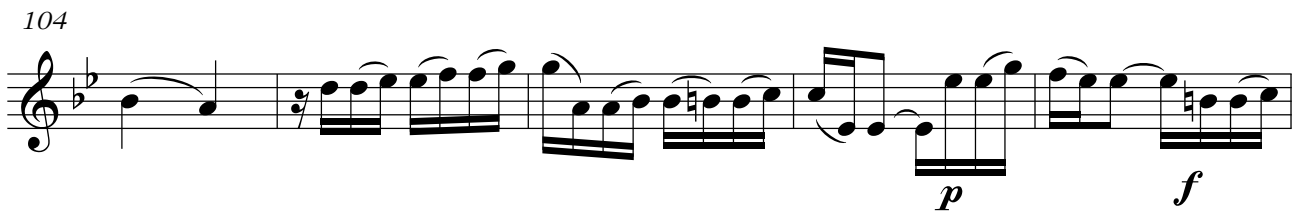
94 *p*



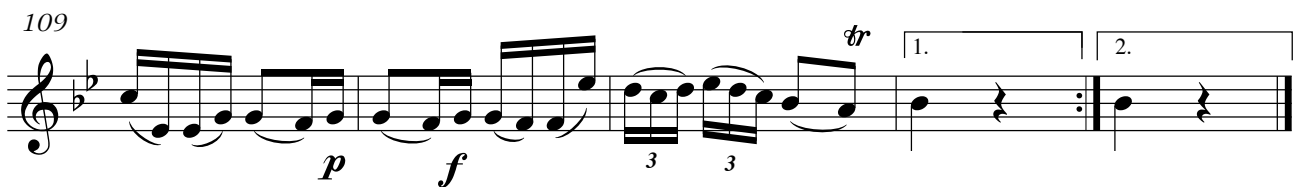
99 *f* *p* *f* *tr*



104 *p* *f*



109 *p* *f* 3 3 *tr* 1. 2.



34

p *f*

38

p *f*

44

tr *p* *f* *p* *tr*

50

tr *tr*

56

tr

62

f *p* *f*

68

3

74

p *f* *tr*

78 *tr*

82 *tr*

86

90

97

103 *f* *p*

109 *f*

115 *p* *f* *tr*